

# Practical Obstetrics 5<sup>th</sup> stage

# Fetal membranes

Dr. Yaseen M.



# Fetal membranes

1-Yolk sac

2-**Amnion** m.

Allanto**amnion**

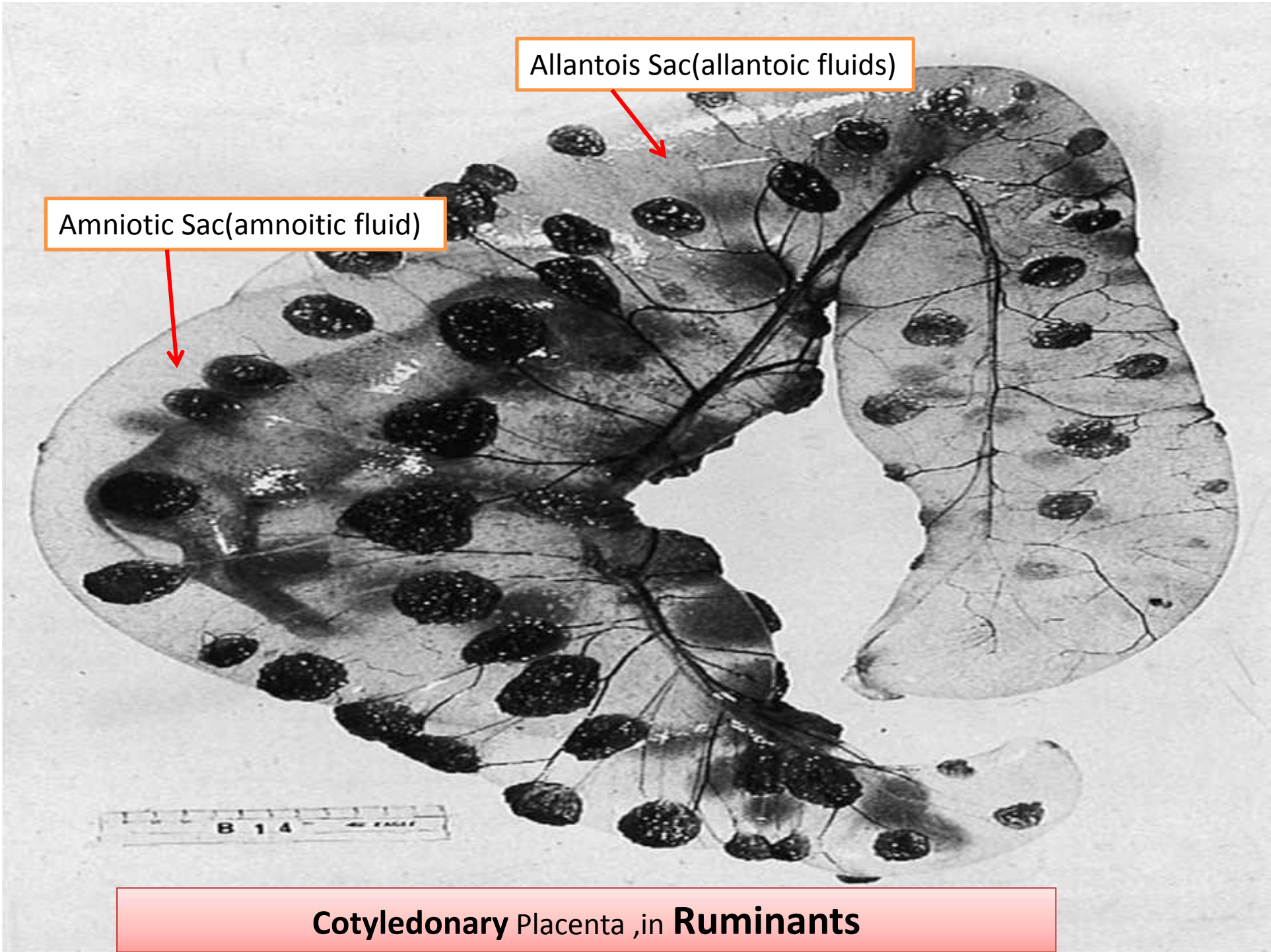
3-Chorion m.

Allanto**chorion**

4-**Allantois** m.



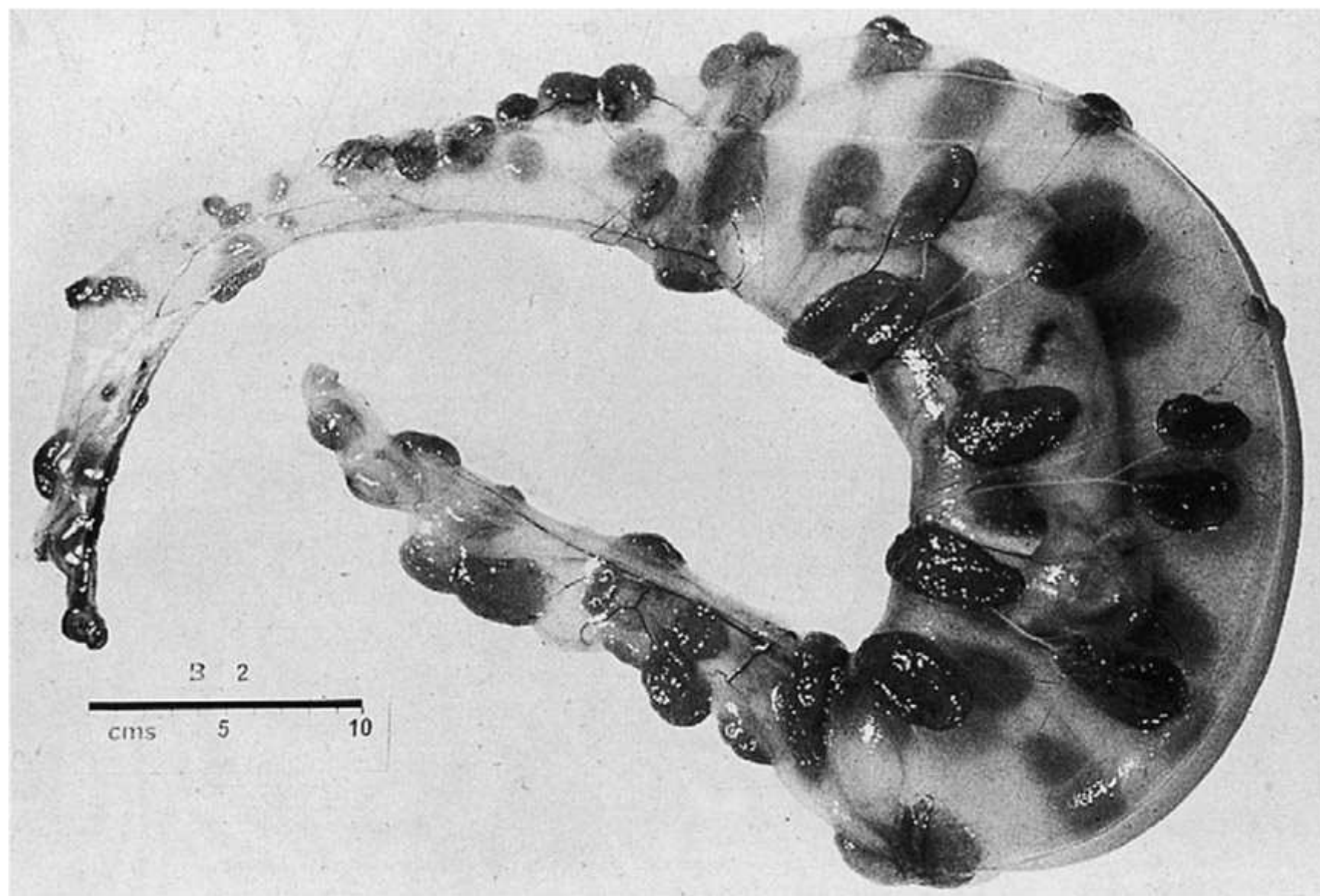




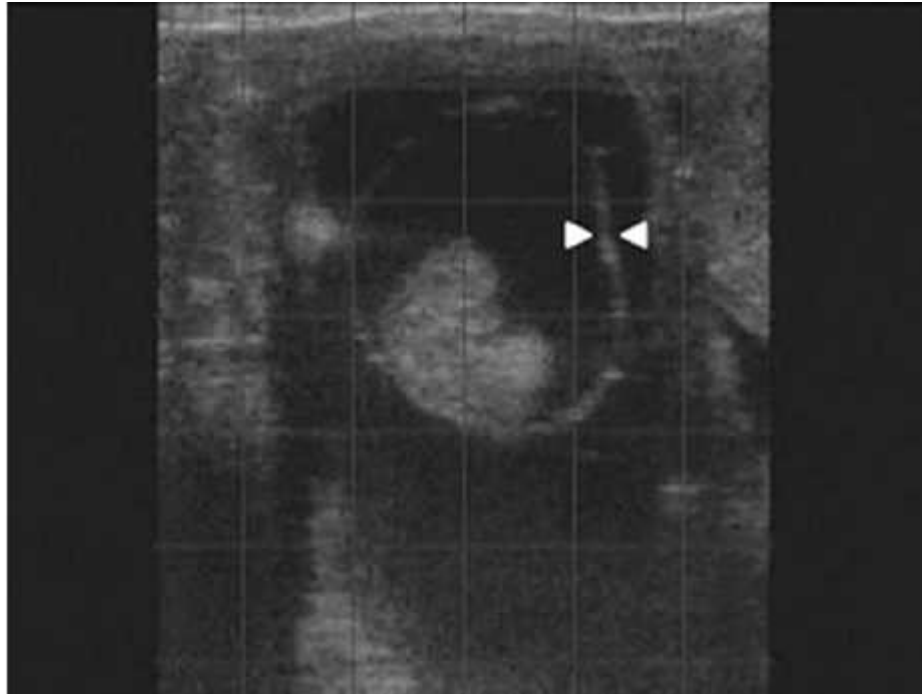
Allantois Sac(allantoic fluids)

Amniotic Sac(amnoitic fluid)

**Cotyledonary Placenta ,in Ruminants**



[Redacted text]



FINGER-LIKE PROCESSES OR VILLI  
CONTAINING CAPILLARY TUFTS GROW  
OUT FROM THE ALLANTOCHORION INTO  
THE CRYPTS OF THE MATERNAL  
CARUNCLES, THUS IS FORMED THE  
CHARACTERISTIC RUMINANT  
COTYLEDON, OR **PLACENTOME**

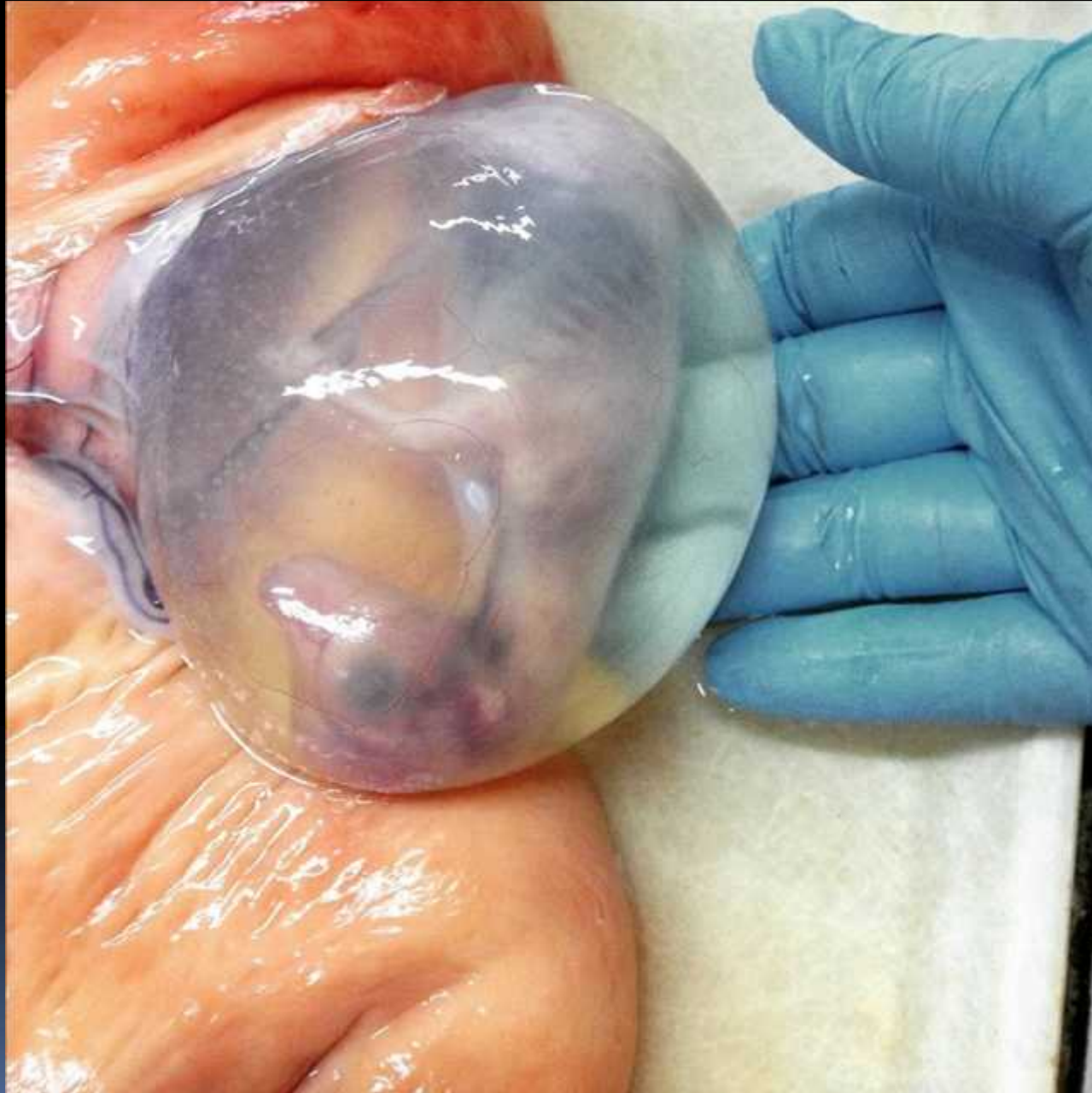


**Cotyledonary Placenta (ex. small ruminants)**

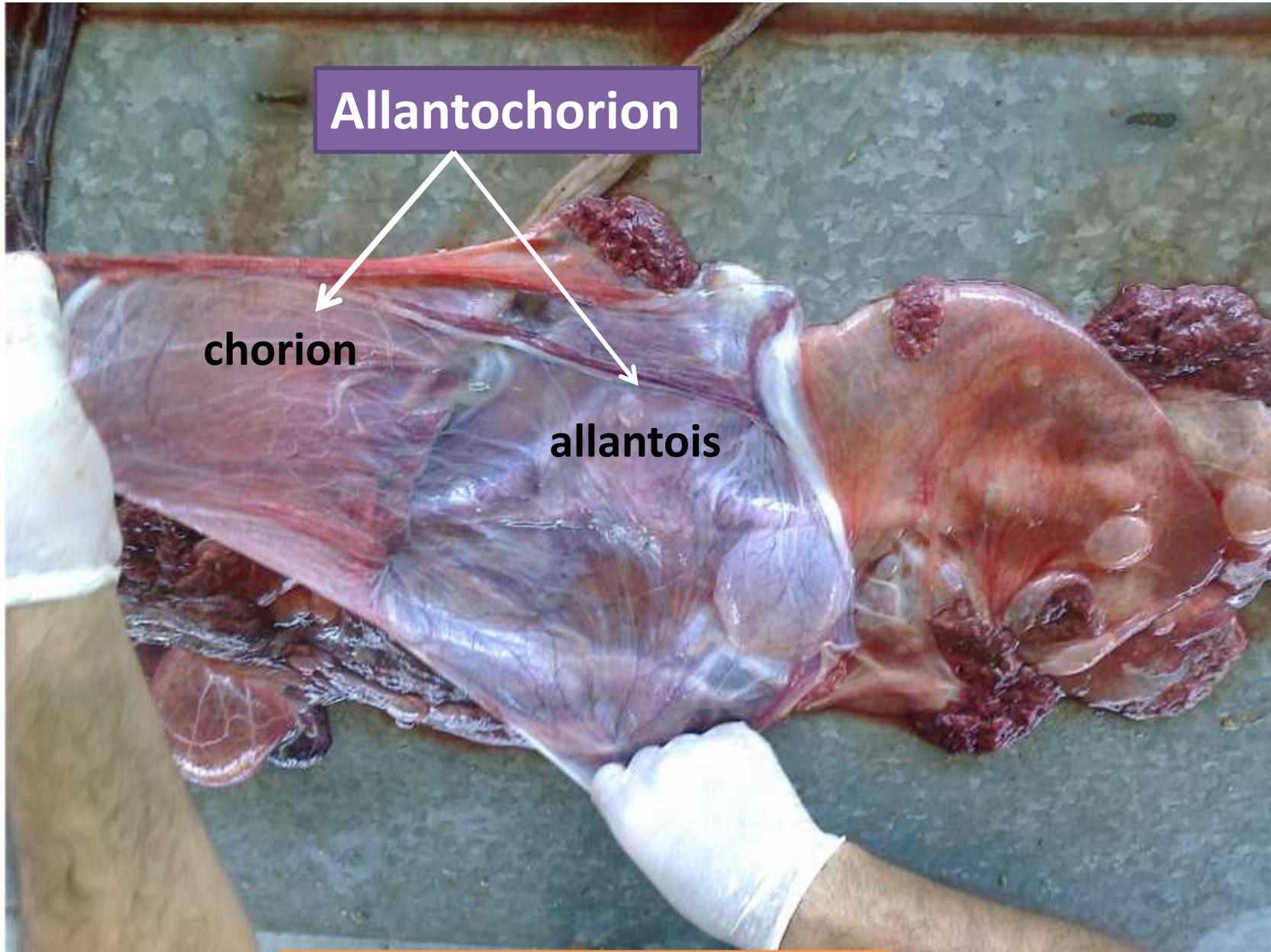


**Placentome :maternal caruncles  
and cotyledon**

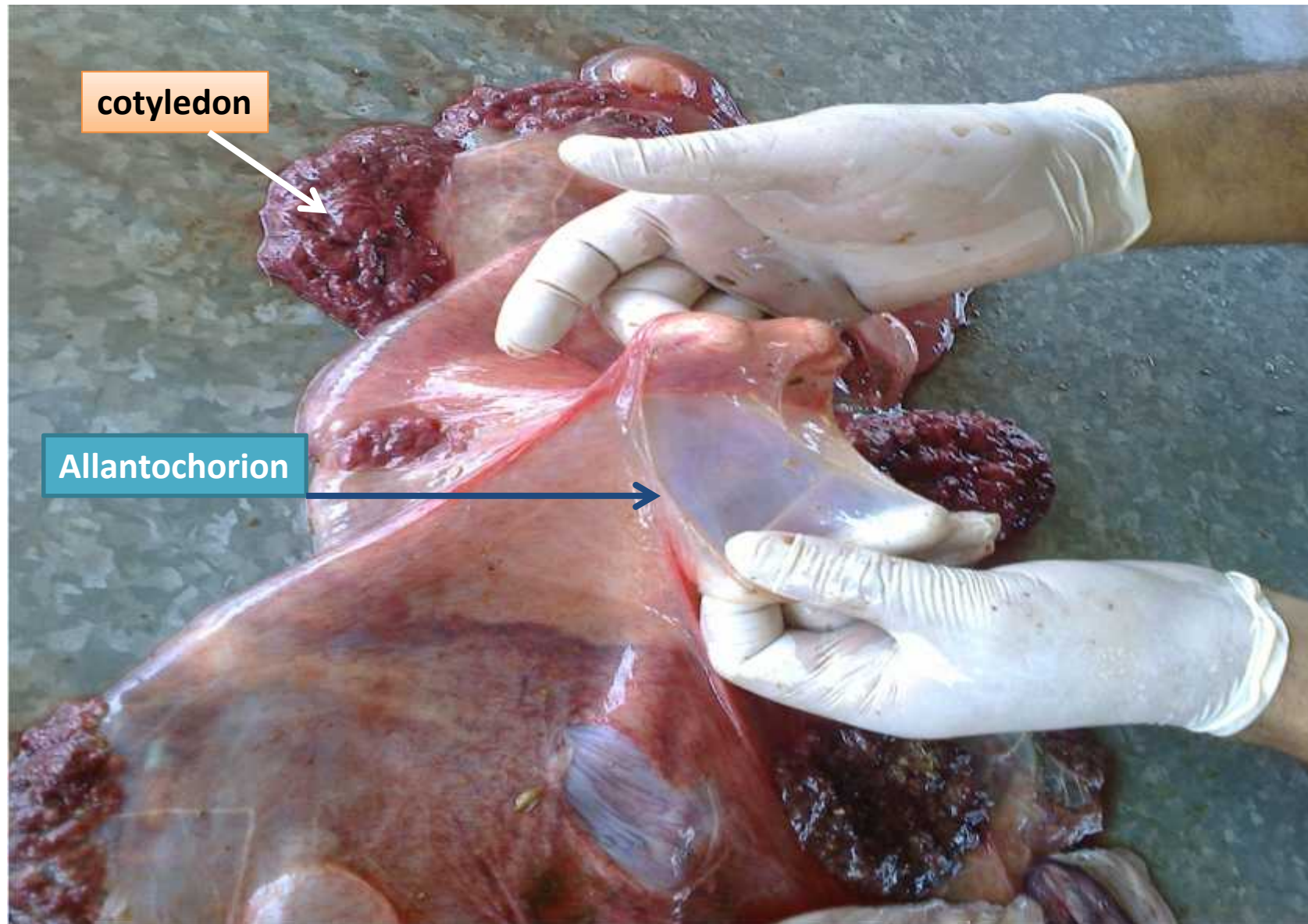








**Cotyledonary Placenta (ex.bovine)**



**Cotyledonary Placenta ,in Ruminants**

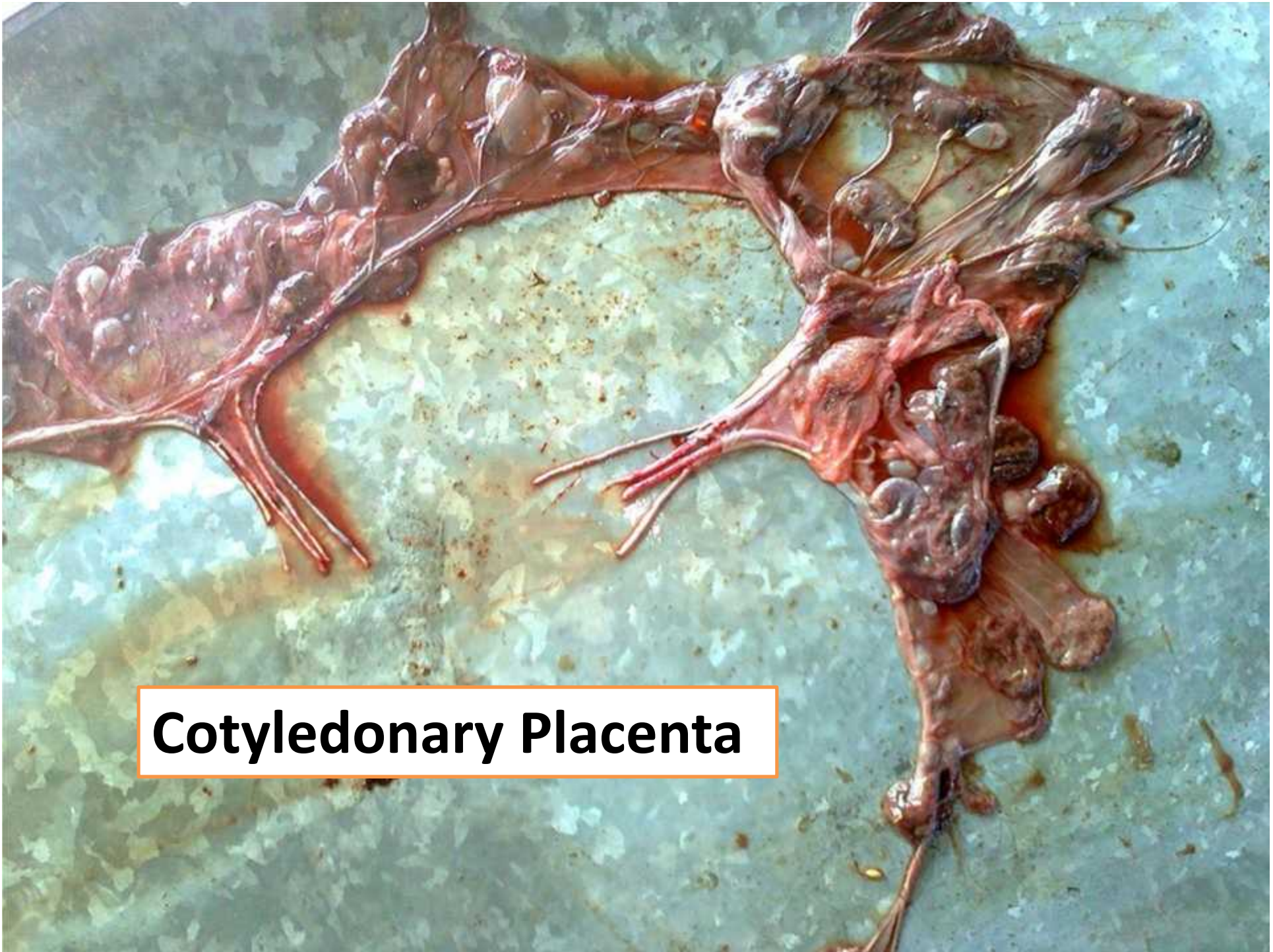




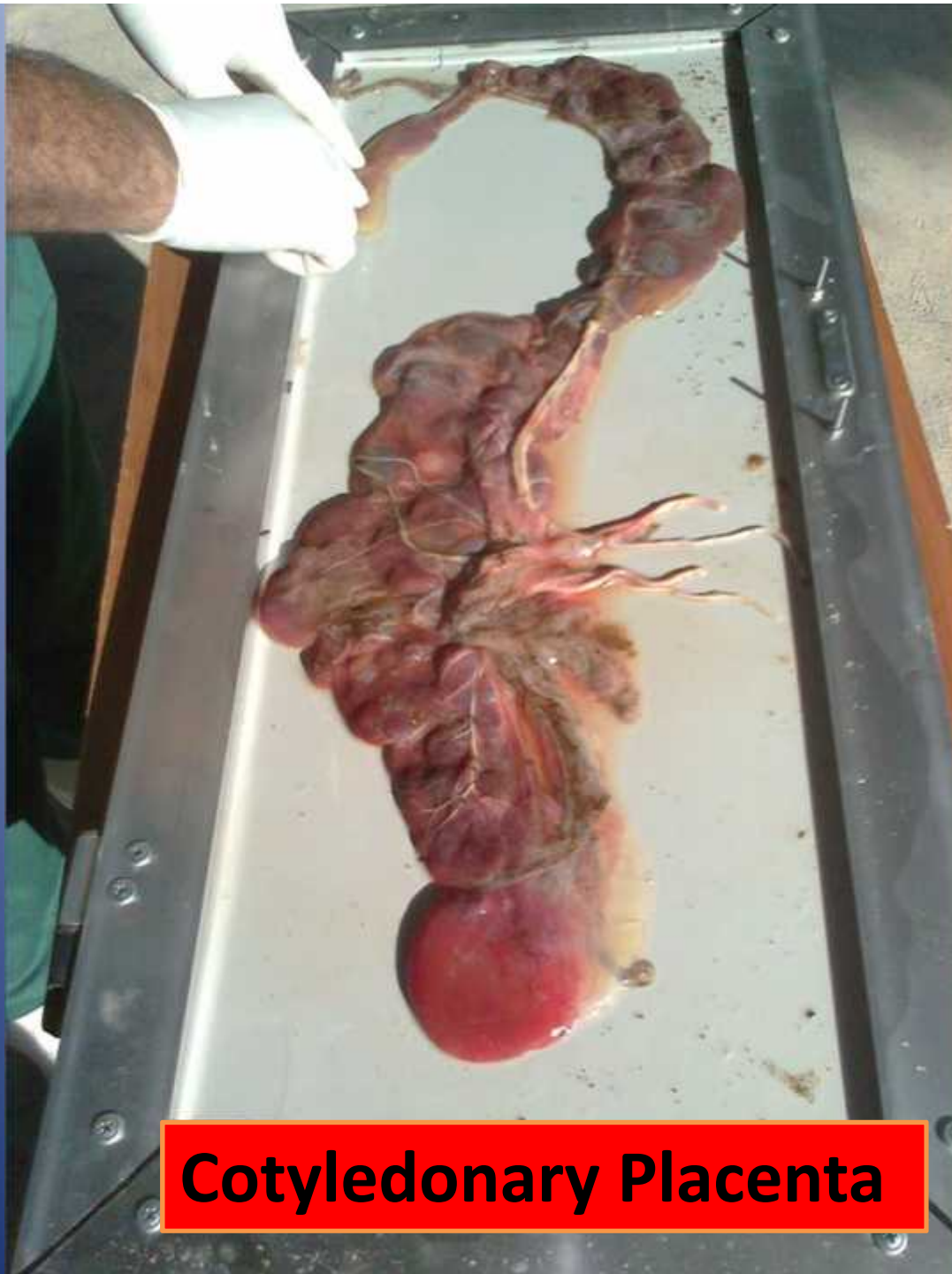


Umbilical cord : **Vein , Arteries and Urachus.**  
**30cm, 7cm, 90cm**



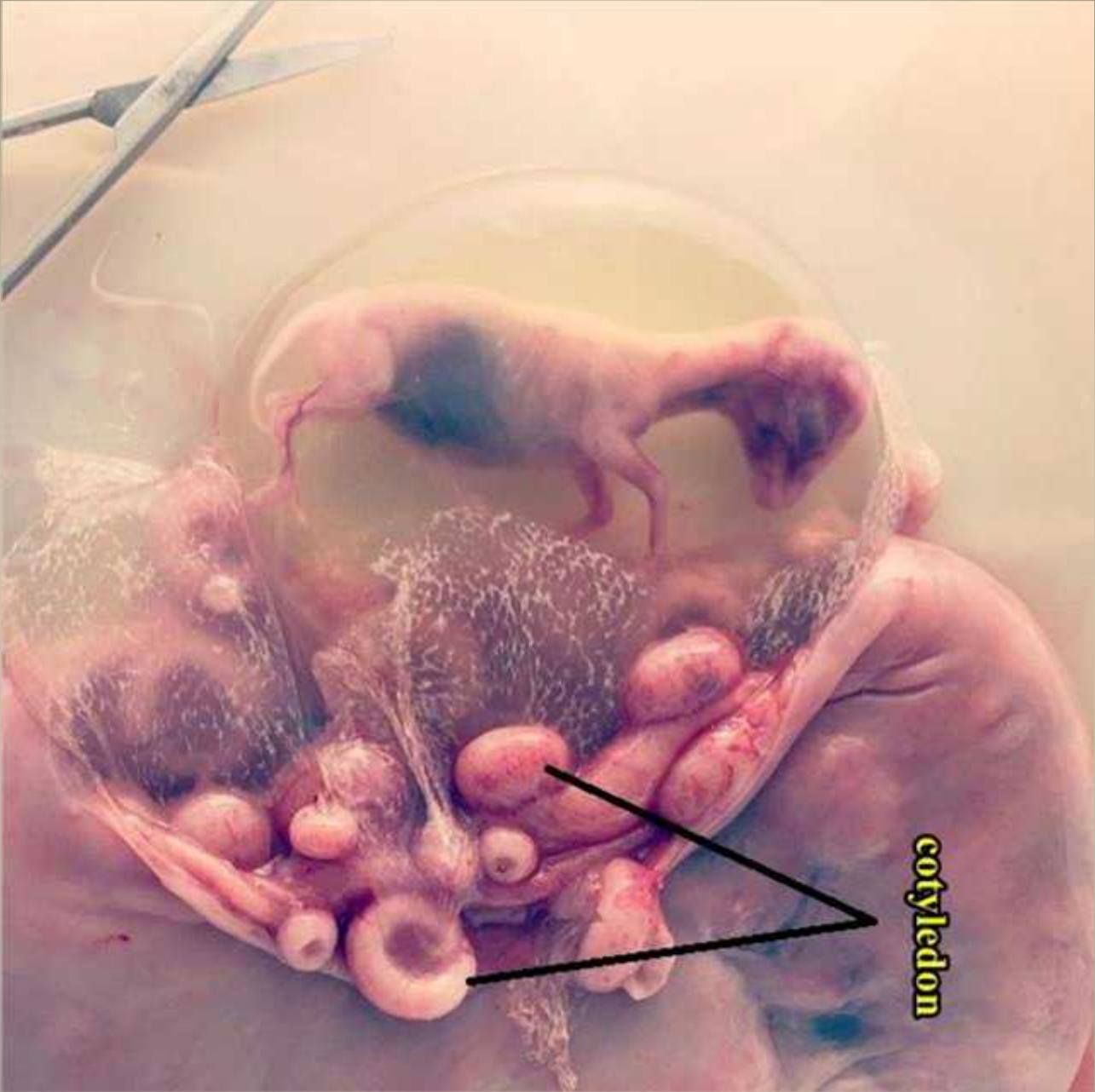


**Cotyledonary Placenta**



**Cotyledonary Placenta**





**Hippomane:** discoid, rubber-like mass float in amniotic and occasionally in allantoic f.



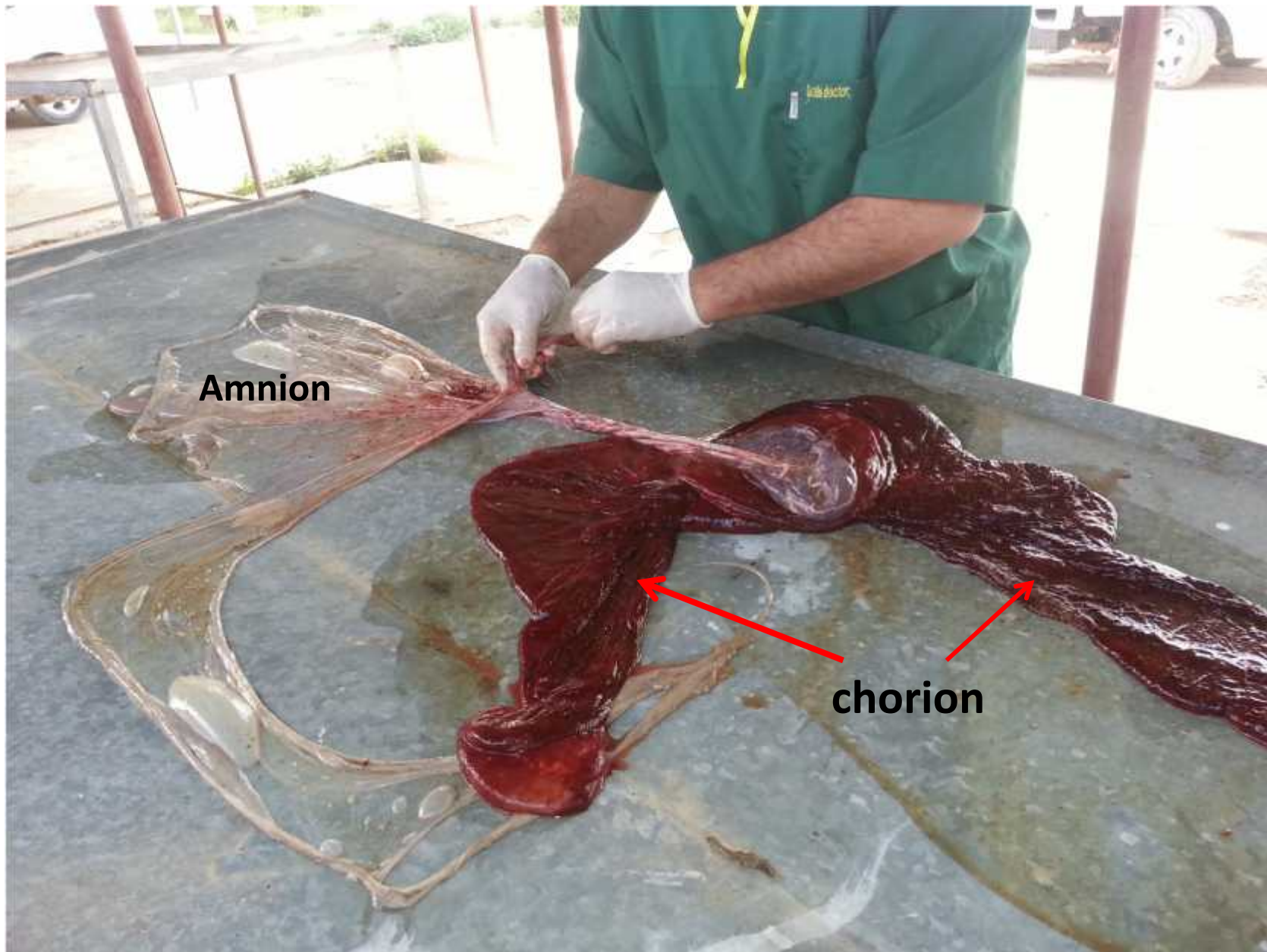








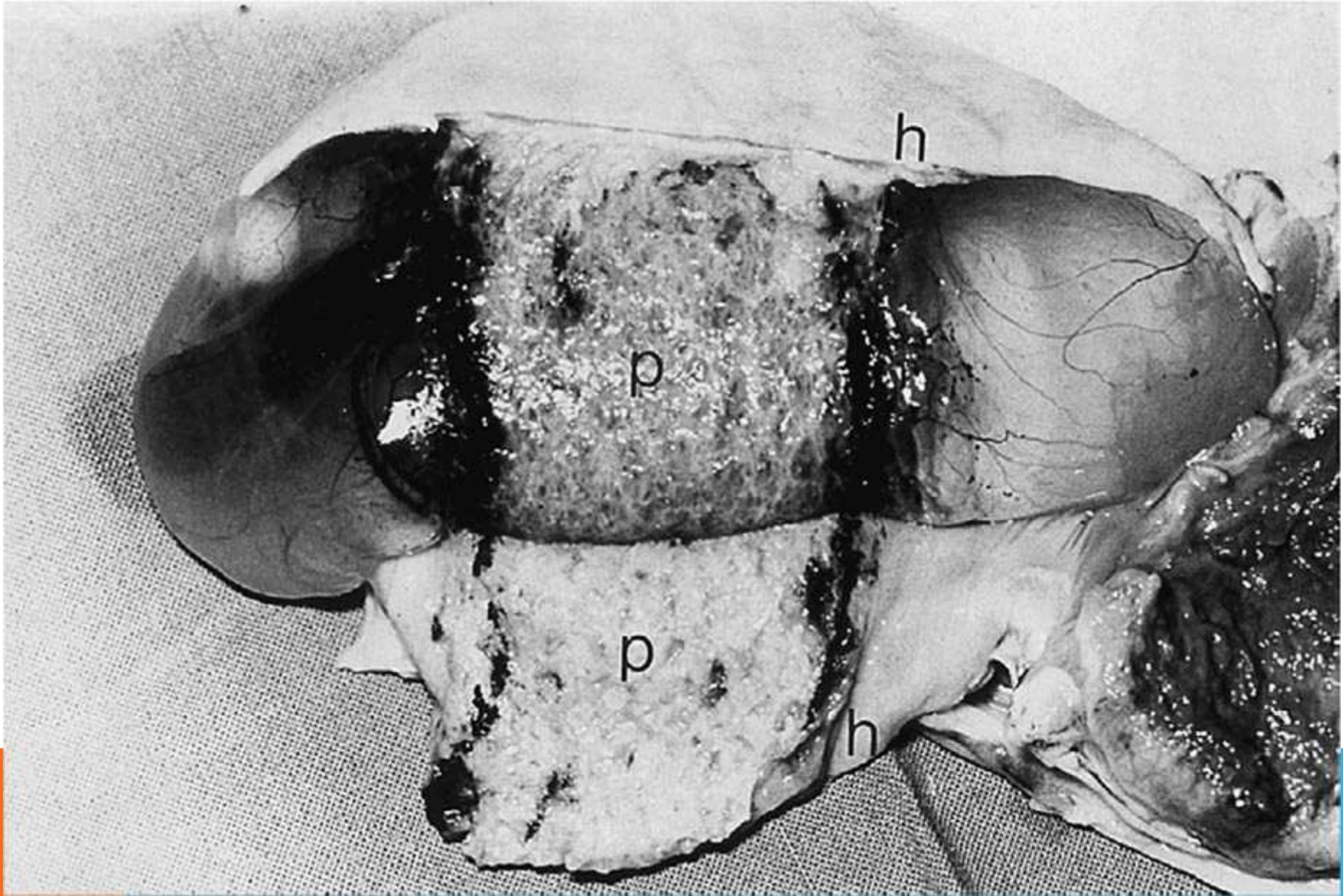




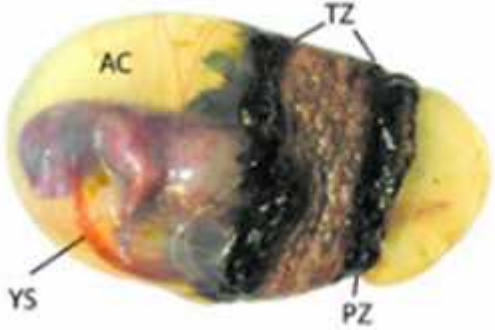
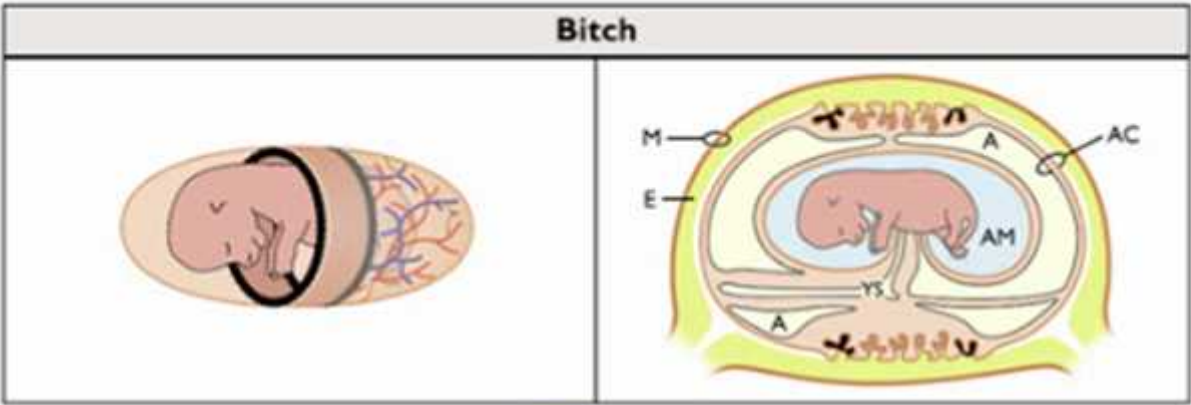
**Diffuse placenta (micro-cotyledonary), in Mares**







**Zonary** Placenta , in **Bitch and cat**







Evaluation of the Placenta, part 2 - YouTube[via torchbrowser.com].mp4



fetal membrane in cow.mp4



rectal palpation in cow.mp4